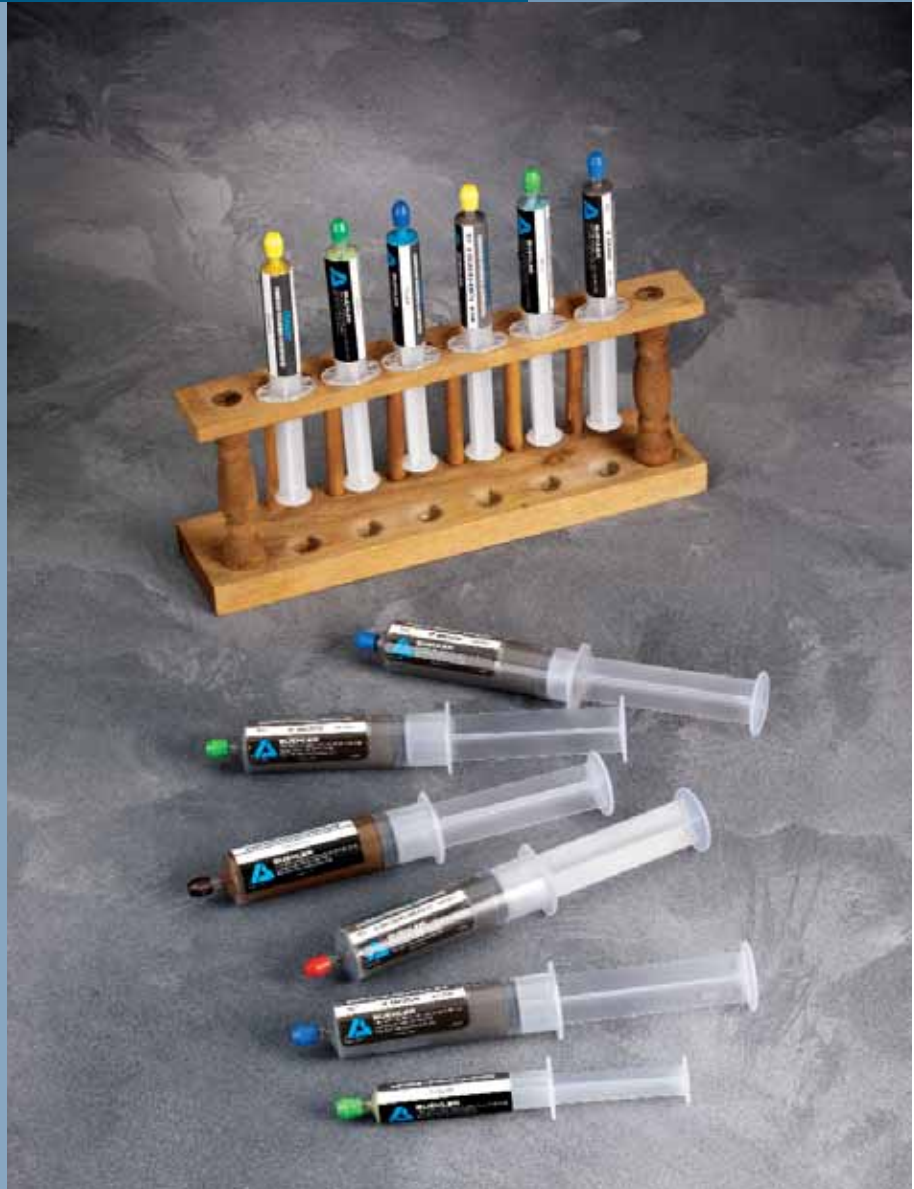


# BUEHLER® MetaDi® DIAMOND PASTE

- Superior Polishing Results
- Environmentally Safe
- Nontoxic, Noncombustible Formulations
- Used for Soft Materials Where Embedding is of Concern
- Monocrystalline and Polycrystalline Formulations
- Natural and Synthetic Diamond Available, Depending on Formulation



# MetaDi<sup>®</sup> and MetaDi<sup>®</sup> II Diamond Paste

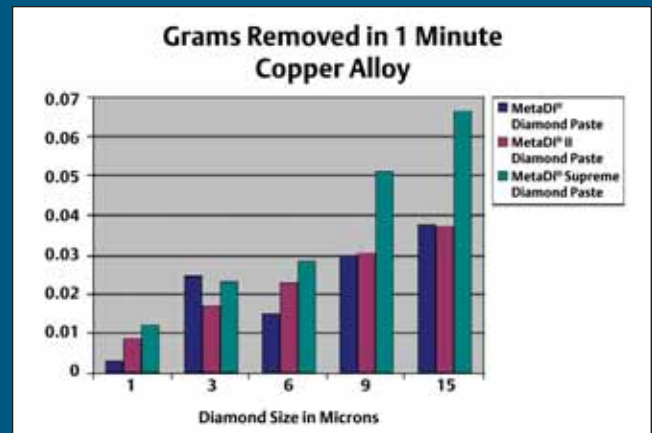
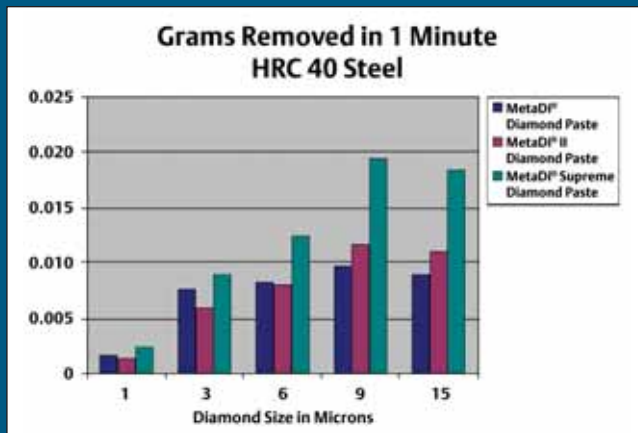


## MetaDi<sup>®</sup> and MetaDi<sup>®</sup> II Diamond Paste

- MetaDi Diamond Paste utilizes virgin natural monocrystalline diamond, graded for particle size as well as shape
- MetaDi II Diamond Paste contains economical monocrystalline synthetic diamond
- The finely graded diamond abrasive particles are blocky and have sharp edges to ensure clean and efficient cutting
- Color coded by micron size for easy identification
- Packaged in easy-to-use dispensing syringe
- Can be used with ApexHercules™ Rigid Grinding Discs and with Polishing Cloths
- Available in 5 gram and 20 gram sizes



Sharp edges of monocrystalline diamonds of MetaDi<sup>®</sup> Diamond Paste ensure clean and efficient cutting action.

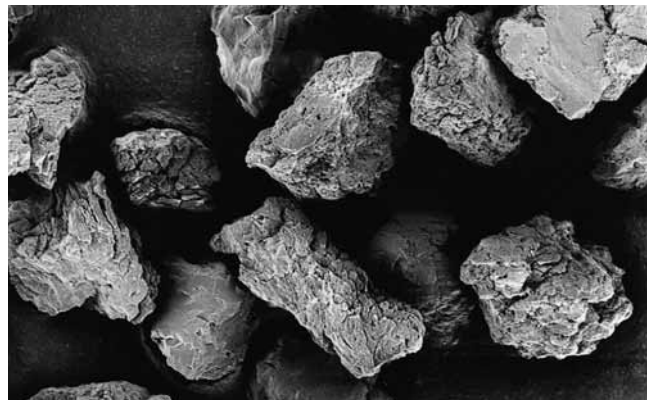


# MetaDi<sup>®</sup> Supreme Polycrystalline Diamond Paste

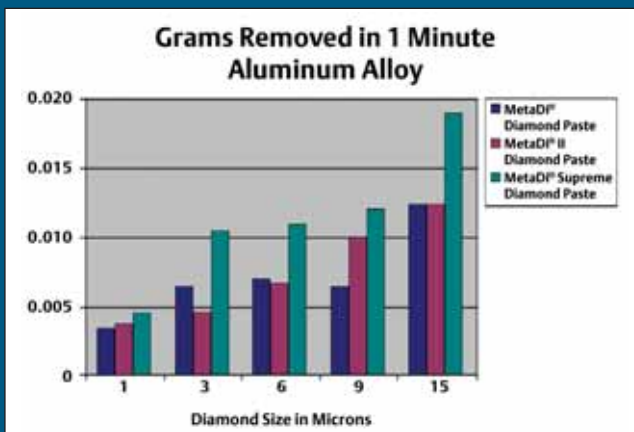


## MetaDi<sup>®</sup> Supreme Polycrystalline Diamond Paste

- Provides highest removal rates, best surface finishes and least subsurface deformation on metals and other materials
- MetaDi<sup>®</sup> Supreme Paste offers the same benefits as MetaDi<sup>®</sup> Supreme Suspensions
  - More cutting facets resulting in higher removal rates and shorter polishing time
- Color coded packaging by micron size for easy identification
- Packaged in easy-to-use dispensing syringe
- Can be used with ApexHercules™ Rigid Grinding Discs and with Polishing Cloths
- Available in 5 gram and 20 gram sizes



Angular, blocky-shaped polycrystalline diamonds of MetaDi<sup>®</sup> Supreme provide numerous cutting facets on the particle surface, resulting in less deformation.



## Benefits of Diamond Paste

Diamond paste products should be used with materials prone to diamond embedding. Diamond paste provides the most immediate cutting action at the time of cloth changing. Paste should typically be applied to a clean cloth by rotating wheel at approximately 50 rpm and placing syringe tip about 2" out from the center of the platen. Start dispensing product into the cloth, resulting in a spiral pattern. If a raised bead is present, too much product has been dispensed. Diamond paste products should be used with a lubricant such as MetaDi<sup>®</sup> Fluid.

## Ordering Information

Diamond Size	Color	Quantity	MetaDi® Heavy Concentration	MetaDi® II Medium Concentration	MetaDi® Supreme Heavy Concentration*
0.25µm	Gray	5 grams	40-6112	40-6241	
0.25µm	Gray	20 grams	40-6102	40-6240	
1µm	Blue	5 grams	40-6138	40-6244	40-6300
1µm	Blue	20 grams	40-6128	40-6243	40-6301
3µm	Green	5 grams	40-6152	40-6247	40-6302
3µm	Green	20 grams	40-6142	40-6246	40-6303
6µm	Yellow	5 grams	40-6172	40-6250	40-6304
6µm	Yellow	20 grams	40-6162	40-6249	40-6305
9µm	Deep Red	5 grams	40-6192	40-6253	40-6306
9µm	Deep Red	20 grams	40-6182	40-6252	40-6307
15µm	Brown	5 grams	40-6212	40-6256	40-6308
15µm	Brown	20 grams	40-6202	40-6255	40-6309

\* This product is grey in color, with color coded packaging.

Type	Quantity	Catalog Number
MetaDi® Fluid (water soluble)	4 oz. (0.12l)	40-6014
	16 oz. (0.47l)	40-6016
	32 oz. (0.95l)	40-6032
	85 oz. (2.5l)	40-6064-085
Mineral Spirits	32 oz. (0.95l)	40-8140-032
	1 gal. (3.8l)	40-8140-128
Polishing Oil	32 oz. (0.95l)	40-8142-032
	1 gal. (3.8l)	40-8142-128
AutoMet® Lapping Oil	6 oz. (0.18l)	60-3250-006
	1 gal. (3.8l)	60-3250-128
Applicator Bottle	8 oz. (0.24l)	60-3255
Spray Pump Nozzle	for 8 oz. (0.24l) MetaDi Bottles	40-6650

For a complete listing of Buehler consumables, please refer to our Quality At Work - Consumables Buyers Guide. Buehler continuously makes product improvements; therefore, technical specifications are subject to change without notice.

© 2006 BUEHLER LTD. Printed in U.S.A. 25M0506 FN01294 \*For metallurgical equipment produced by BUEHLER LTD. USA

**BUEHLER ANALYST®  
SECTION**

7



**BUEHLER**  
BUEHLER LTD. – Worldwide Headquarters  
41 Waukegan Road • P.O. Box 1  
Lake Bluff, Illinois 60044-1699 USA  
Tel: 847/295-6500 • Fax: 847/295-7979  
Sales: 1/800/BUEHLER • 1/800/283-4537  
Web Site: <http://www.buehler.com>  
Email: [info@buehler.com](mailto:info@buehler.com)

**BUEHLER GMBH**  
In der Steele 2 • 40599 Düsseldorf  
Postfach 16 03 55 • 40566 Düsseldorf  
Telefon: (+49) 0211/974100 • Telefax: (+49) 0211/9741079  
Web Site: <http://www.buehler-met.de>  
Email: [info@buehler-met.de](mailto:info@buehler-met.de)

**BUEHLER SARL**  
Miniparc de Dardilly, Bât. 0  
3, Chemin du Jubin • 69570 Dardilly-France  
Téléphone: (+33) (04) 37 59 81 20  
Télécopie: (+33) (04) 37 59 81 29  
Web Site: <http://www.buehler.fr>  
Email: [info@buehler.fr](mailto:info@buehler.fr)

**BUEHLER UK**  
101, Lockhurst Lane • Coventry • CV6 5SF  
Telephone: (+44) (0) 24 7658 2158 • Fax: (+44) (0) 24 7658 2159  
Web Site: <http://www.buehler.co.uk>  
Email: [sales@buehler.co.uk](mailto:sales@buehler.co.uk)

**BUEHLER CANADA**  
9999 Highway 48  
Markham, Ontario L3P 3J3  
Telephone: (905) 201-4686 • Fax: (905) 201-4683  
Sales Telephone: 1-800-268-3593  
Email: [info@buehler.ca](mailto:info@buehler.ca)

**BUEHLER ASIA**  
5/F Vogue Centre  
696 Castle Peak Road  
Lai Chi Kok, Kowloon  
Hong Kong, SAR, China  
Telephone: (852) 2307 0909  
Fax: (852) 2307 0233