

Mounting



SimpliMet® 1000 Mounting Press

- Basic automatic press increases productivity
- Two temperature selections
- High wattage heater for faster heating cycles
- Safe electro-hydraulic operation and bayonet closure
- Duplex molds double specimen throughput and are easy to change
- Up to 2" and 50mm diameter duplex molds

SimpliMet® 3000 Automatic Mounting Press

- Expands upon the capabilities of the SimpliMet® 1000 by increasing the level of automation
- Automatic mounting press with mold sensing and automatic parameter loading
- Programmable system with 25 user definable methods
- Safe electro-hydraulic operation and durable bayonet mold closure
- Up to 2" and 50mm diameter duplex molds



Compression Mounting Compounds







Castable Mounting Compounds

Mounting Accessories

The primary purpose of mounting specimens is for convenience in handling specimens of difficult shapes or sizes during the subsequent steps of preparation and examination. A secondary purpose is to protect and preserve edges or surface defects during preparation. The method of mounting should in no way be injurious to the microstructure of the specimen.

Pressure and heat are the most likely sources of injurious effects and should be seriously considered during the mounting selection process. Compression mounting compounds cure between 2100-4200 psi (145-290 bar) at approximately 300 °F (150 °C). Compression mounting is more economical, requires less time and technique, requires a mounting press, but is not always suitable for heat or pressure sensitive samples.

Buehler Compression Mounting Guide

Characteristics	Material	Cost/1¼" Mount	Color	Temp	Pressure
Least Expensive, More Shrinkage, Fast Cure	PhenoCure®	 1x	Black, Red, or Green	300 °F/ 150 °C	4200 psi/ 290 bar
Best Edge Retention; Very Low Shrinkage; Fine Particle Size; Excellent Flow, Chemically Resistant	EpoMet® F	 4x	Black	300 °F/ 150 °C	4200 psi/ 290 bar
Best Edge Retention; Very Low Shrinkage, Chemically Resistant	EpoMet® G	 4x	Black	300 °F/ 150 °C	4200 psi/ 290 bar
Near Zero Electrical Resistance; SEM - EDS/WDS	ProbeMet®	 7x	Bronze	300 °F/ 150 °C	4200 psi/ 290 bar
Low Electrical Resistance; SEM - EDS/WDS	KonductoMet®	 9x	Black	300 °F/ 150 °C	4200 psi/ 290 bar
Transparent, Slow Cure	TransOptic™	 3x	Transparent	350 °F/ 177 °C	2100 psi/ 145 bar



TransOptic™ Mounting Powder, KonductoMet® and ProbeMet® Conductive Mounting Powders



Phenolic Premolds, Red PhenoCure®, Green PhenoCure® and EpoMet® F Mounting Powders



Phenolic PreMolds

Conductive Thermosetting Mounting Powders

Material	Color	Filler	Quantity	Catalog Number	Price
ProbeMet®*	Bronze	Copper	4 lb. (1.84kg)	20-3385-064	
KonductoMet®	Black	Carbon	1 lb. (0.45kg)	20-3375-016	
KonductoMet®	Black	Carbon	25 lb. (11.3kg)	20-3375-400	

* Use KonductoMet when doing EDS or WDS, if copper is of interest at the edge. Use ProbeMet if carbon is being analyzed.

Thermoplastic Mounting Powders

TransOptic™	Clear	None	5 lbs. (2.3kg)	20-3400-080	
-------------	-------	------	----------------	-------------	--

Thermosetting Powders

Material	Color	Filler	Quantity	Catalog Number	Price
PhenoCure®	Black	Wood Flour	5 lbs. (2.3kg)	20-3100-080	
PhenoCure®	Black	Wood Flour	25 lbs. (11.3kg)	20-3100-400	
PhenoCure®	Red	Wood Flour	5 lbs. (2.3kg)	20-3200-080	
PhenoCure®	Red	Wood Flour	25 lbs. (11.3kg)	20-3200-400	
PhenoCure®	Green	Wood Flour	5 lbs. (2.3kg)	20-3300-080	
PhenoCure®	Green	Wood Flour	25 lbs. (11.3kg)	20-3300-400	
EpoMet® F	Black	Fine Filled Epoxy	4 lbs. (1.84kg)	20-3381-070	
EpoMet® F	Black	Fine Filled Epoxy	25 lbs. (11.3kg)	20-3381-400	
EpoMet® G	Black	Regular Filled Epoxy	4 lbs. (1.84kg)	20-3380-064	
EpoMet® G	Black	Regular Filled Epoxy	25 lbs. (11.3kg)	20-3380-400	

1"

Thermosetting Phenolic PreMolds, 1" (25.4mm) Wood Flour Filler

Color	Quantity	Catalog Number	Price
Black	100	20-3111-100	
Black	500	20-3111-500	
Black	500 bulk packed	20-3111-501	

1¼"

Thermosetting Phenolic PreMolds, 1¼" (32mm) Wood-Flour Filler

Color	Quantity	Catalog Number	Price
Black	100	20-3112-100	
Black	500	20-3112-500	
Black	500 bulk packed	20-3112-501	
Red	100	20-3212-100	
Red	500	20-3212-500	
Red	500 bulk packed	20-3212-501	
Green	100	20-3312-100	
Green	500	20-3312-500	
Green	500 bulk packed	20-3312-501	



Phenolic PreMolds



Release Agent 1qt.,
2 oz., 1pt.



Silicone Mold Release Spray

1½"

Thermosetting Phenolic PreMolds, 1½" (38mm) Wood-Flour Filler

Color	Quantity	Catalog Number	Price
Black	100	20-3113-100	
Black	500	20-3113-500	
Black	500 bulk packed	20-3113-501	
Red	100	20-3213-100	
Red	500	20-3213-500	
Red	500 bulk packed	20-3213-501	
Green	100	20-3313-100	
Green	500	20-3313-500	
Green	500 bulk packed	20-3313-501	

Compression Mounting Accessories

Description	Quantity	Catalog Number	Price
Gloves, for handling warm mounts	Pair	20-3040	
Release Agent with Swab**	2 oz. (0.03ℓ)	20-8185-002 ‡	
Release Agent Refill	½ pt. (0.24ℓ)	20-8185-008 ‡	
Release Agent Refill	1 pt. (0.47ℓ)	20-8185-016 ‡	
Release Agent Refill	1 qt. (0.95ℓ)	20-8185-032 ‡	
MetCoat™ Protective Lacquer Coating	6 oz. (0.17kg)	20-8190 ‡	
Silicone Mold Release, Spray	6 oz. (0.17kg)	20-3046 ‡	
Powdered Mold Release	1.6 oz. (45g)	20-3048	
SamplKlip® (Stainless Steel)	100	20-4000-100	
UniClip Specimen Support Clips (Plastic)	100	20-5100-100	

‡ Restricted article, requires special packaging ** Used for mold release and other mounting applications

Approximate Number of Mounts*

Name	Container Size	1" (25.4mm)	1¼" (32mm)	1½" (38mm)	2" (50mm)
EpoxiCure®	quart (0.95ℓ)	83	64	41	24
EpoxiCure®	gallon (3.8ℓ)	333	259	166	97
EpoxiCure® NC	quart (0.95ℓ)	82	64	41	24
EpoHeat®	quart (0.95ℓ)	87	68	43	25
EpoThin® Low Viscosity Epoxy	quart (0.95ℓ)	82	64	41	24
EpoThin® Low Viscosity Epoxy	gallon (3.8ℓ)	330	257	165	96
EpoKwick® Fast Cure Epoxy	quart (0.95ℓ)	82	64	41	24
EpoKwick® Fast Cure Epoxy	gallon (3.8ℓ)	330	257	165	96
EpoColor™	quart (0.95ℓ)	82	64	41	24
SamplKwick® Fast Cure Acrylic	1 lb. (0.45kg)	48	38	24	14
SamplKwick® Fast Cure Acrylic	5 lb. (2.3kg)	250	194	125	72
SamplKwick® Fast Cure Acrylic	25 lb. (11.5kg)	1250	972	625	364
SamplKwick® Fast Cure Acrylic	100 lb. (45kg)	4893	3805	2446	1427
VariKleer	2.2 lb. (1kg)	54	42	27	15
VariDur® High Performance Mounting System	1 lb. (0.45kg)	48	38	24	14
VariDur® High Performance Mounting System	5 lb. (2.3kg)	250	194	125	72
VariDur® 3000	2.2 lb. (1kg)	54	42	27	15

* Based on a full SamplKup® without a sample - actual number of mounts will depend on sample size, mix ratios used and mount height.

Castable Mounting Compounds are recommended for mounting specimens that are sensitive to high pressures and temperatures. Epoxy resins provide good physical adherence, can have low shrinkage, can infiltrate voids, pores and cracks, and offer better edge retention and hardness than acrylic systems. Acrylic resins offer an economical product with a short cure time.

Castable Mounting System Selection Guide

Name	Typical Cure Time	Peak Temperature	Shore D Hardness	Recommended Mold	Uses and Restrictions
SamplKwick® (Translucent)	5-8 minutes	175 °F (79 °C)	80 Least Edge Retention	Any	Least expensive system; used for mounting printed wiring boards and polymers; good for x-ray diffraction work (no peak interferences); high shrinkage (not recommended for edge retention)
VariKleer (Transparent)	10-15 minutes	212 °F (100 °C)	84	SamplKup	Designed for use with a pressure vessel, this general use acrylic hardens crystal clear with minimal shrinkage. To achieve crystal clear samples, reusable silicone or EPDM molds should not be used.
VariDur® 3000 (Opaque)	15-30 minutes	252 °F (122 °C)	90	Any	Minimal shrinkage, good edge retention. For best results use Release Agent each time.
VariDur® (Opaque)	10 minutes	170 °F (77 °C)	85 Good Edge Retention	Any	Inexpensive; good edge retention, used with many metals when the edge detail is not critical
EpoKwick® (Translucent)	90 minutes	185 °F (85 °C)	82	SamplKup	Fast curing epoxy; more shrinkage than other epoxies; viscosity 250-400 cps at 77 °F (25 °C); not recommended for vacuum infiltration of voids due to fast curing time; gives acceptable edge retention; good for most specimens
EpoColor™ (Red)	90 minutes	175 °F (79 °C)	82 Good Edge Retention	SamplKup	Provides color contrast between mount and specimen that can be helpful when studying edges; viscosity 400-700 cps at 77 °F (25 °C); good for most specimens; recommended for vacuum impregnation
EpoxiCure® (Transparent)	6 hours	82 °F (28 °C)	82 Excellent Edge Retention	Any	General purpose epoxy; viscosity 400-600 cps at 77 °F (25 °C) good adherence to specimen; can be used to vacuum impregnate voids (viscosity can be reduced by warming to 122 °F (50 °C)); good for heat-sensitive specimens (very low exotherm during polymerization)
EpoxiCure® NC (Translucent)	5 hours	240 °F (116 °C)	84 Good Edge Retention	Any	General purpose epoxy - No hazard shipping fees. Viscosity 500 cps at 77 °F (25 °C)
EpoHeat® (Transparent)	90 minutes	295 °F (146 °C)	85 Best Edge Retention	Any	Fast, heat cure epoxy system with low shrinkage and low viscosity (32 cps at 176 °F (80 °C)). Excellent for vacuum impregnation. Requires oven cure. Golden color.
EpoThin® (Transparent)	9 hours	80 °F (27 °C)	78 Good Edge Retention	Any	Low viscosity 200-350 cps at 77 °F (25 °C) (can be further reduced by warming resin to 122 °F (50 °C)) and good penetration of voids during vacuum impregnation; good adherence to specimen; good for heat-sensitive specimens (lowest exotherm during polymerization)

Curing time is not a precise quantity as it can be influenced by the nature of the mold (how well, or how poorly, the exothermic heat of polymerization is extracted), by the volume of the cast resin used, by the volume and nature of the specimen being encapsulated, by the temperature of the mix, by room temperature and air circulation. The values listed are typical for metallic specimens cast in 1.25 inch (30mm) diameter SamplKup molds at 70 °F (21 °C) using fresh resin and hardener.

Factors That Affect Time of Cure (Up Arrows Indicate a Longer Cure Time)

Humidity	Temperature (of Environment)	EPDM Cups	1.5" (38mm) or 2" (50mm) Cups	1" (25.4mm) Cups	Thermally Resistant Sample	Size of Sample
↑	Cooler ↑ Warmer ↓	↑	↓	↑	↓	Smaller ↑ Larger ↓

Castable Mounting Compounds

Laboratory
Grade



**EpoxiCure® 1 qt. Resin and
½ pt. Hardener**



EpoxiCure® NC



**EpoColor™ Hardener
and Resin**



EpoMix® Epoxide



**SamplKwick® Kit Includes:
1lb. resin, 12 oz. hardener,
5 cups, 10 stirring sticks and
1 scoop**



**VariDur® Kit Includes:
1lb. resin, 12 oz. hardener,
5 cups, 10 stirring sticks
and 1 scoop**

Epoxy Systems Mix Ratios provided as Resin: Hardener by Weight

Type	Quantity	Resin	Hardener	Kit	Price
EpoxiCure® Mix Ratio: 5:1	1 qt. (0.95ℓ)	20-8130-032			
	1 gal. (3.8ℓ)	20-8130-128			
	½ pt. (0.24ℓ)		20-8132-008 ✕		
	1 qt. (0.95ℓ)		20-8132-032 ✕		
EpoxiCure® NC Mix Ratio: 5:1.4 (this product qualifies for noncorrosive shipping)	1 qt. (0.95ℓ)	20-8150-032			
	½ pt. (0.24ℓ)		20-8152-008		
EpoHeat®* Mix Ratio: 4:1	1 qt. (0.95ℓ)	20-8120-032			
	1 pt. (0.47ℓ)		20-8122-016 ✕		
EpoThin® Low Viscosity Epoxy Mix Ratio: 5:1.95	1 qt. (0.95ℓ)	20-8140-032			
	1 gal. (3.8ℓ)	20-8140-128			
	1 pt. (0.47ℓ)		20-8142-016 ✕		
	64 oz. (1.9ℓ)		20-8142-064 ✕		
EpoKwick® Fast Cure Epoxy Mix Ratio: 5:1	1 qt. (0.95ℓ) kit			20-8128 ✕	
	1 gal. (3.8ℓ) set			20-8129 ✕	Resin & Hardener only
	1 qt. (0.95ℓ)		20-8138-032 ✕		
	1 gal. (3.8ℓ)	20-8136-128			
EpoColor™ Mix Ratio: 5:1	1 qt. (0.95ℓ)	20-8143-032			
	½ pt. (0.24ℓ)		20-8144-008 ✕		
EpoMix® EpoxiCure Premeasured	10-1oz. (30mℓ) packages			20-8133-001 ✕	

✕ Restricted article, requires special packaging

*Requires oven cure at 150 °F (65 °C)

Acrylic Systems Mix Ratios can be adjusted from 1:1 to 3:2 by volume depending on desired viscosity and cure time

Type	Quantity	Resin	Hardener	Kit	Price
SamplKwick® Fast Cure Acrylic	1 lb. (0.45kg) Kit			20-3560 ✕	
	1 lb. (0.45kg)	20-3562			
	5 lb. (2.3kg)	20-3566			
	25 lb. (11.5kg)	20-3562-025			
	100 lb. (45kg)	20-3562-100			
	12 oz. (0.36ℓ)		20-3564 ✕		
	64 oz. (1.92ℓ)		20-3568 ✕		
	2½ gal. (9.6ℓ)*		20-3564-320 ✕		
VariKleer	5 gal. (19.2ℓ)**		20-3564-640 ✕		
	1 kg. (2.2lb) Kit			20-3590	
VariDur® High Performance Mounting System	1 kg. (2.2lb)	20-3591			
	500mℓ (16.9oz)		20-3592		
VariDur® 3000	1 lb. (0.45kg) Kit			20-3570 ✕	
	1 lb. (0.45kg)	20-3572			
	5 lb. (2.3kg)	20-3576			
	12 oz. (0.36ℓ)		20-3574 ✕		
VariDur® 3000	64 oz. (1.92ℓ)		20-3578 ✕		
	1 kg. (2.2lb) Kit			20-3580	
	1 kg. (2.2lb)	20-3581			
	500mℓ (16.9oz)		20-3582		

✕ Restricted article, requires special packaging if shipped by air or outside USA

* 5 (qty) ½ gallon containers ** 1 (qty) 5 gallon container



UltraMet® 2 Sonic Cleaning Solution

UltraMet® 2 Sonic Cleaning Solution is an environmentally safe, degreasing agent for difficult cleaning requirements. It is recommended for use on the BuehlerVanguard®, BuehlerVanguard® 2000 Fully Automatic Preparation Systems and all UltraMet® ultrasonic cleaners.

Cleaning Solutions

Type	Quantity	Catalog Number	Price
UltraMet® 2 Sonic Cleaning Solution	32 oz. (0.95ℓ)	75-6000-032	
UltraMet® 2 Sonic Cleaning Solution	6 oz. (0.18ℓ)	63-6000-006	

If you need conductive castable mounts for SEM, EDS, or WDS work, then you need Buehler's Conductive Filler. Adding this nickel based filler to Buehler's epoxies or acrylics makes your mounts conductive. Traditionally your only options for conductivity were compression mounting media or sputter coating. Friable specimens, like electronics and coatings, cannot withstand the high pressures and temperatures of compression mounting. Buehler's Conductive Filler resolves this situation and eliminates the need to sputter coat.

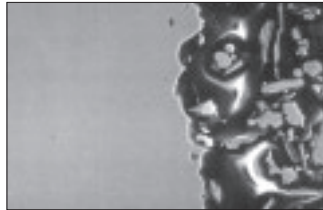
Simply choose the Buehler epoxy or acrylic system that best suits your mounting needs and add the filler. You can add more or less filler to meet your conductivity needs. A general recommendation is to use 1.5-2 times the weight of the mounting media (for epoxies) and/or volume (for acrylics). Adding Conductive Filler to a given media reduces shrinkage, extends cure time and increases viscosity.



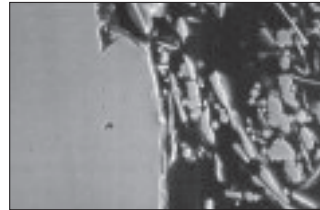
Conductive Filler for castable mounts

Conductive Filler - for use with Castable Systems (except EpoHeat)

Description	Quantity	Catalog Number	Price
Conductive Filler	2 lb. (.9kg)	20-8500	



SEM micrograph of Conductive Filler in EpoxiCure (2000x) showing a clear interface between mount and specimen



SEM micrograph of Conductive Filler in SamplKwick (2000x) showing a clear interface between mount and specimen

Buehler's Castable Mount Pigments allow you to enhance the contrast between your specimen and any of our epoxy or acrylic mounting compounds. In addition, these pigments give you the opportunity to color code your specimens in your choice of blue, black, brown or red without having to use a compression mounting compound.

While these pigments color code and enhance contrast, they do not infiltrate pores and cannot be used as a substitute for EpoColor™.



Blue, Black, Red and Brown pigment for castable mounts

Pigments for Castable Mounts

Description	Quantity	Catalog Number	Price
Blue pigment for castable mounts	1 oz (30mℓ)	20-8501	
Black pigment for castable mounts	1 oz (30mℓ)	20-8502	
Brown pigment for castable mounts	1 oz (30mℓ)	20-8503	
Red pigment for castable mounts	1 oz (30mℓ)	20-8504	



SamplKlip®



SamplKlip® I



Specimen Support Clips




UniClip



EdgeMet Kit

Castable Mounting Accessories

Description	Type	Quantity	Catalog Number	Price
SamplKlip®	Stainless Steel	100	20-4000-100	
SamplKlip® I	Plastic	100	20-4100-100	
SamplKlip® I	Plastic (small O.D.)	100	20-4100-100S	
Specimen Support Clips*	Plastic	1000	20-4001-000	
UniClip Specimen Support Clips	Plastic	100	20-5100-100	
Glass Plate, seamed edges	5" x 7" (12.7 x 17.8cm)	Each	20-8179-001	
Release Agent with Swab**		2 oz. (0.03ℓ)	20-8185-002 ‡	
Release Agent Refill		½ pt. (0.24ℓ)	20-8185-008 ‡	
Release Agent Refill		1 pt. (0.47ℓ)	20-8185-016 ‡	
Release Agent Refill		1 qt. (0.95ℓ)	20-8185-032 ‡	
MetCoat®		6 oz. (0.17kg)	20-8190 ‡	
Mounting Cement	Lakeside 70	12 bars	40-8100	
	Balsam	4 oz. (113g)	40-8110-004 ‡	
	Balsam	1 lb. (0.45kg)	40-8110-016 ‡	
Mounting Wax	Crystalbond	1 stick, 7" x 7/8" (178mm x 22mm)	40-8150	
	 Crystalbond LT	1 stick, 7" x 1" x 1/2" (178 x 25.4 x 12.7mm)	20-8145	
TEM Epoxy		2 oz. (0.06ℓ)	40-8151	
EdgeMet® Kit	Electroless Nickel Specimen Coating	Kit with 1qt. (0.95ℓ) A & B solutions and 1- 6 oz. (0.18ℓ) Preclean solution	20-8192 ‡	
Pumps for gallon size containers	Gallon	Each	20-8000	
Paper Cups	5 oz. (148mℓ)	100	20-8177-100	
Stirring Sticks	Wooden	1000	20-8175	
Flat Edge Filler		1 lb. (.45kg)	20-8196	
Conductive Filler		2 lb. (.9kg)	20-8500	

‡ Restricted article, requires special packaging

* Best when used in Epoxy

** Used for mold release and other mounting applications

Plastic Ring Forms for Castable Mounts

Type	Size	Quantity	Catalog Number	Price
Plastic* (OD Nominal)	1" (2.5cm)	10	20-8151-010	
	1" (2.5cm)	100	20-8151-100	
	1¼" (3.2cm)	10	20-8152-010	
	1¼" (3.2cm)	100	20-8152-100	
	1½" (3.8cm)	10	20-8153-010	
	1½" (3.8cm)	100	20-8153-100	
	2" (5.0cm)	10	20-8154-010	
	2" (5.0cm)	100	20-8154-100	

*This product was changed due to growing environmental concerns. Phenolic Ring Forms are available on page 21.



Phenolic Ring Forms & Recessed Plastic Discs

Phenolic Ring Forms & Recessed Plastic Discs for Castable Mounts

Type	Size	Quantity	Catalog Number	Price
Phenolic Ring Forms OD Nominal	25mm	10	20-8155-010	
	25mm	100	20-8155-100	
	30mm	10	20-8156-010	
	30mm	100	20-8156-100	
	40mm	10	20-8157-010	
	40mm	100	20-8157-100	
	50mm	10	20-8158-010	
	50mm	100	20-8158-100	
	1" (2.5cm)	10	20-8251-010	
	1" (2.5cm)	100	20-8251-100	
	1¼" (3.2cm)	10	20-8252-010	
	1¼" (3.2cm)	100	20-8252-100	
	1½" (3.8cm)	10	20-8253-010	
	1½" (3.8cm)	100	20-8253-100	
Recessed Plastic Discs*	25mm	5	20-3511	
	1" (2.5cm)	5	20-3521	
	30mm	5	20-3512	
	1¼" (3.2cm)	5	20-3513	
	1½" (3.8cm)	5	20-3514	
	40mm	5	20-3515	
	50mm	5	20-3516	
	2" (5.0cm)	5	20-3517	

*Recessed plate for use with Cast N' Vac or as a base with our ringforms



PWB Coupon Pins



PWB Met Pins

Castable Mounting Accessories

Description	Type	Quantity	Catalog Number	Price
PWB Holders	1½" (2.9cm O.D.)	10	20-8200-010	
Angle Polishing Inserts	1¼" Diameter (32mm)	10	20-8205-010	
PWB Coupon Pins	1¼" long	1000	60-5053	
PWB Met Pins	¾" long	3000	60-5084	



Cast N' Vac Castable Vacuum System is simple to operate, mobile and designed for Single Sample impregnation. The Cast N' Vac is complete with built-in vacuum pump, a small quantity of mixing supplies, including epoxy supply tubes, recessed disc, and Phenolic Ring Forms. Choose from a variety of castable materials, and Ring Form sizes from 1" and 25mm to 2" and 50mm to suit your laboratory needs.



SamplKups®



Reusable EPDM Mounting Cups



Reusable EPDM Mounting Cups



Disposable Plastic Castable
Mounting Cups



MetKleer® Molds and
MetKleer® Adhesive Base

Castable Mounting Molds

Description	Size	Quantity	Catalog Number	Price
SamplKups® Reusable Mounting Cups	1¼" (3.2cm)	12	20-8180	
	25mm	12	20-9177	
	1" (2.5cm)	12	20-9178	
	30mm	12	20-9179	
	1½" (3.8cm)	12	20-9181	
	40mm	12	20-9182	
	50mm	12	20-9183	
Reusable EPDM* Mounting Cups	2" (50mm)	12	20-9184	
	1" (2.5cm)	5	20-8181	
	1¼" (3.2cm)	5	20-8182	
	1½" (3.8cm)	5	20-8183	
	2" (5cm)	5	20-8184	
	2.5" x 1.4" x 1.8" (63mm x 35mm x 46mm)	1	20-6185	
	6" x 4" x 2" (150mm x 100mm x 50mm)	1	20-6186	
Reusable Silicone Molds	6" x 3" x 1" (150mm x 76mm x 25mm)	1	20-6187	
	2.2" x 1.2" x 0.9" (55mm x 30mm x 22mm)	1	20-8484	
	2.8" x 1.6" x 0.9" (70mm x 40mm x 22mm)	1	20-8485	
	1.2" (30mm) diameter	1	20-8480	
	2" (50mm) diameter	1	20-8482	
	2.4" (60mm) diameter	1	20-8483	
	Disposable Plastic Castable Mounting Cups	1" (2.5cm)	50	20-8280
1¼" (3.2cm)		50	20-8281	
1½" (3.8cm)		50	20-8282	
2" (5cm)		50	20-8283	
MetKleer® Molds	0.875" x 0.875" (2.2cm x 2.2cm) ID	10	20-8187	
MetKleer® Adhesive Bases	4" x 5" (10.2cm x 12.7cm)	10	20-8188	

*EPDM = Ethylene Propylene Diene Methylene Terpolymer



MetGrip® Sample Holders
1 1/2" (38mm)



Leveling Press

Miscellaneous Mounting Accessories

Description	Quantity	Catalog Number	Price
MetGrip® Sample Holders 1" (25.4mm)	10	20-3801	
MetGrip® Sample Holders 1 1/4" (32mm)	10	20-3802	
MetGrip® Sample Holders 1 1/2" (38mm)	10	20-3803	
Silicone Mold Release, Spray	6 oz. (0.17kg)	20-3046 ✖	
Powdered Mold Release	1.6 oz. (45g)	20-3048	
Plasticine Clay	1 lb. (0.45kg)	1522-0300	
Metal Slides	2	1522-0100	
Leveling Press	Each	0422-1000	
Leveling Press Kit (*Includes Leveling Press, Plasticine Clay & 4 Metal Slides)	Each	0799-0124	
Specimen Storage Cups for 1 1/4" (32mm) mounts	25	20-8174	
Glass Slides, Regular 1.06" x 1.81" (27mm x 46mm)	1 gross (144)	40-8000-001	
Glass Slides, Regular 1.06" x 1.81" (27mm x 46mm)	10 gross (1440)	40-8000-010	
Glass Slides, Micro 3" x 1" (76.2mm x 25.4mm)	10 gross (1440)	40-8002-010	
Glass Slides, Cover 0.98" x 1.18" (25mm x 30mm)	10 x 1000 pcs	40-8007-010	
Glass Slides, Cover 0.94" x 1.54" (24mm x 39mm)	10 gross (1440)	40-8008-010	
Glass Slides 1" (25mm) diameter	100	40-8011-100	
Glass Slides 1" (25mm) diameter	1000	40-8011-000	
Glass Slides 4" (100mm) diameter, 1/8" thick for use with IsoMet® 4000 & 5000	2	40-8013-002	

✖ Restricted article, requires special packaging

Join the Free Buehler e-Club Today at www.buehler.com to Access Valuable Technical Information & Material Solutions

In today's competitive world, material scientists and metallographers need to quickly find effective solutions to preparation issues. The e-club



is a Buehler database of technical publications and solutions on a variety of material applications. Joining the Buehler e-club is free and you will have 24 hour online access to Buehler Sum-Met™



The Science Behind Materials Preparation, which is the sum of our experience on materials preparation, giving step-by-step information on sectioning, mounting, and grinding-polishing. Buehler's guide gives extensive information and procedures for specific materials, etching, microscopy, microindentation hardness testing, imaging, lab safety, consumables usage and trouble-shooting. By joining the Buehler e-club you also gain access to Buehler Tech-Notes and can

elect to receive periodic e-mail notification on special offers, new products, and consumables.



Buehler is the Science Behind Materials Preparation and Analysis™